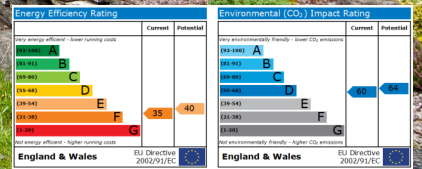


3 Shawbirch Cottages, Eyton, Telford

TF6 6ES



**£184,995**  
**Region**

**Internal Inspection is essential for superbly presented and greatly improved spacious three bedroom semi detached cottage. The property has well planned accommodation including, lounge, dining room, refitted kitchen, superbly refitted bathroom with separate shower cubicle, three good sized bedrooms and a useful store/box room. The property occupies a fantastic sized plot with large rear landscaped gardens that enjoy views over open countryside. The property also has the benefit of a detached double, extensive parking for several vehicles, double glazing and LPG central heating. Viewing Highly Recommended.**





**Tenure** Awaiting Confirmation

**Council Tax** Awaiting Confirmation

**Fixtures & Fittings** Where specifically mentioned in these sales particulars are included in the sale price.

**N.B** Please note, that any of the services, heating systems or any appliances at this property, have not been tested, therefore no warranty can be given or implied as to their working order.

**Viewing Arrangements**

by appointment 24 HOURS A DAY 7 DAYS A WEEK, although office hours are limited to normal working hours we are available by telephone to take enquiries, valuations and viewings at anytime. If you do encounter an answer phone please leave a message for a staff member to return your call.

These particulars do not constitute or form a part of any contract. Whilst Harwood Estate Agents and their employees take every care in the preparation of these particulars they hereby state both on behalf of themselves and the vendor that no intending purchaser should rely on any of the statements of representation of fact and the intending purchaser should make his/her own inspection and enquiries in order to satisfy himself/herself of their authenticity and no responsibility is accepted for any error or omission herein.

Details prepared 10-08-2011

Price amended from £209,995 to £199,995 13-09-2011

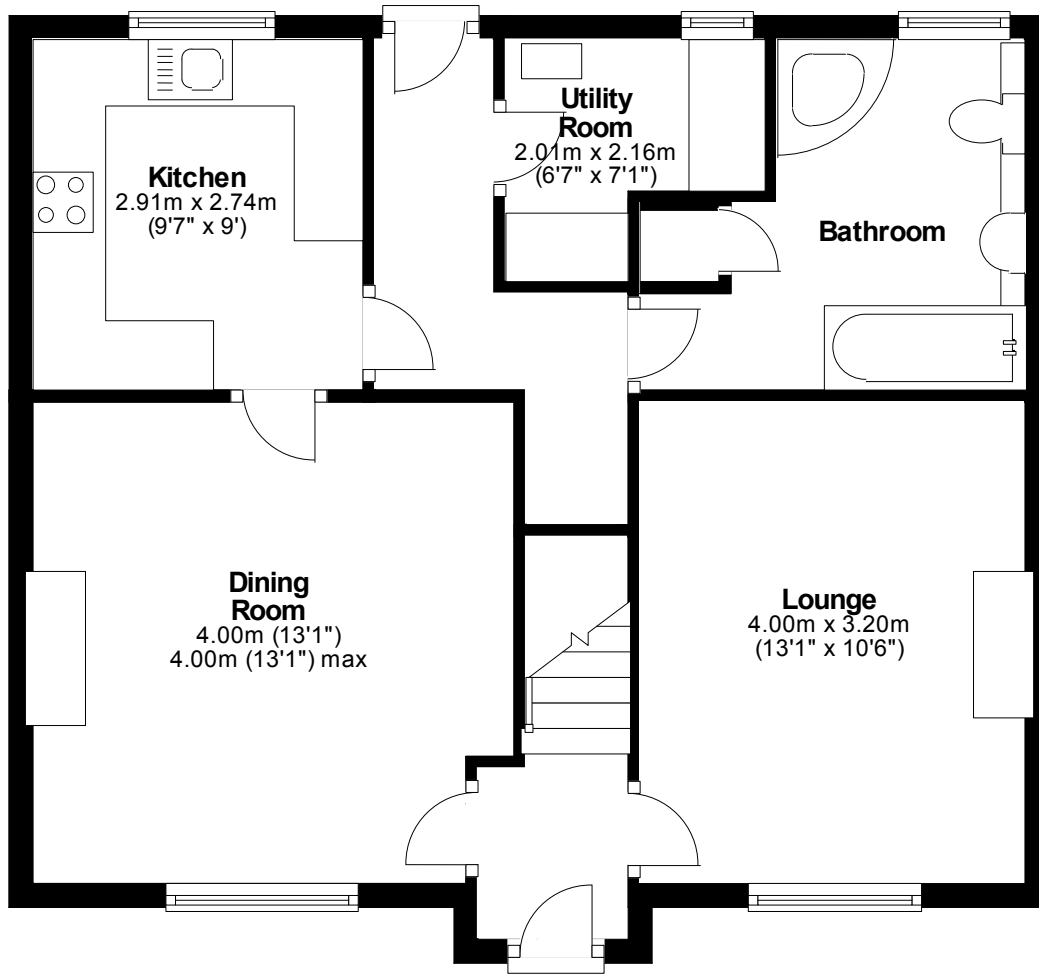
Price amended from £199,995 to £184,995 28-09-2011



(All measurements are approximate). 3 Shawbirch Cottages, Eyton, Telford

## Ground Floor

Approx. 55.7 sq. metres (600.0 sq. feet)



## First Floor

Approx. 42.7 sq. metres (459.7 sq. feet)

